

**Vivace 7.2**  
**35.23793-9906**

#### Fixture details

|                 |                                   |
|-----------------|-----------------------------------|
| Mounting        | Wall                              |
| Light emission  | Direct or Indirect                |
| Fitting cover   | Glass                             |
| Protection rate | IP 54                             |
| Housing         | Aluminium                         |
| Finish          | RAL 9006 white aluminium textured |
| Certificates    | CE, ISO 9001                      |

#### Electric details

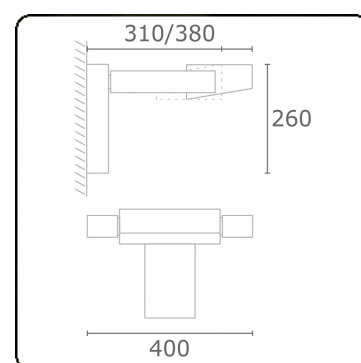
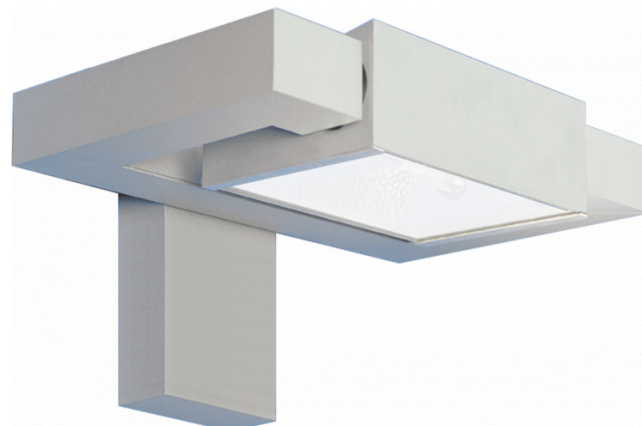
|                  |      |
|------------------|------|
| Protection class | I    |
| Supply           | 230V |
| Control gear box | EG   |

#### Lamp details

|                     |                  |
|---------------------|------------------|
| Lamptype            | LED 3000K        |
| Wattage             | 24W              |
| Gross luminous flux | 2440             |
| Luminaire power     | 29W              |
| Number              | 1                |
| Lifetime LED module | L80/B10 = 50000h |
| Color tolerance     | MacAdam 3        |
| CRI                 | 85               |

#### Photometric details

|              |                |
|--------------|----------------|
| CIE Fluxcode | 53 83 97 99 73 |
|--------------|----------------|



#### Remarks

TC-D and LED with sandblasted glass, other light sources with clear glass

Verrijgbaar op aanvraag.

Disponible sur demande.

Available on request.

Auf Anfrage.

**WXYZ**  
kWh/1000h

**MULTILINE®**

2019/2015