

T-LINE 130



PROFILES & INFILL PANELS

	<p>code type</p> <p>09.37100-0000 profile d/i</p>
	<p>code type</p> <p>09.37150-0000 profile indirect</p>
	<p>code type</p> <p>09.37151-0000 profile direct</p>
	<p>code type</p> <p>09.37101-0001 curved cover ANO</p> <p>09.37101-9999 curved cover RAL</p>
	<p>code type</p> <p>09.37102-0001 flat cover ANO</p> <p>09.37102-9999 flat cover RAL</p>



0001=anodised
geanodiseerd
anodisé
eloxiert

9999=any RAL colour powder coated
elke RAL kleur poederlak
chaque teinte RAL peint-par-poudrage
jede RAL Farbe pulverbeschichtet

END CAPS & CORNERS

	<table><tr><th>code</th><th>type</th></tr><tr><td>01.37180-0001</td><td>curved end cap – right side ANO</td></tr><tr><td>01.37180-9999</td><td>curved end cap – right side RAL</td></tr></table> <p>end cap for curved cover at the right side of the profile eindstuk voor gebogen afdekprofiel aan de rechterzijde van het profiel embout pour couvercle courbé à l'extrémité droite du profil Endstück für gebogenes Abdeckprofil auf der rechten Seite des Profils</p>	code	type	01.37180-0001	curved end cap – right side ANO	01.37180-9999	curved end cap – right side RAL
code	type						
01.37180-0001	curved end cap – right side ANO						
01.37180-9999	curved end cap – right side RAL						
	<table><tr><th>code</th><th>type</th></tr><tr><td>01.37181-0001</td><td>curved end cap – left side ANO</td></tr><tr><td>01.37181-9999</td><td>curved end cap – left side RAL</td></tr></table> <p>end cap for curved cover at the left side of the profile eindstuk voor gebogen afdekprofiel aan de linkerzijde van het profiel embout pour couvercle courbé à l'extrémité gauche du profil Endstück für gebogenes Abdeckprofil auf der linken Seite des Profils</p>	code	type	01.37181-0001	curved end cap – left side ANO	01.37181-9999	curved end cap – left side RAL
code	type						
01.37181-0001	curved end cap – left side ANO						
01.37181-9999	curved end cap – left side RAL						
	<table><tr><th>code</th><th>type</th></tr><tr><td>01.37182-0001</td><td>flat end cap ANO</td></tr><tr><td>01.37182-9999</td><td>flat end cap RAL</td></tr></table> <p>end cap for flat cover eindstuk voor vlak afdekprofiel embout pour couvercle plat Endstück für flaches Abdeckprofil</p>	code	type	01.37182-0001	flat end cap ANO	01.37182-9999	flat end cap RAL
code	type						
01.37182-0001	flat end cap ANO						
01.37182-9999	flat end cap RAL						
 <p>180°</p>	<table><tr><th>code</th><th>type</th></tr><tr><td>01.37160-0000</td><td>In-line coupler 180°</td></tr></table>	code	type	01.37160-0000	In-line coupler 180°		
code	type						
01.37160-0000	In-line coupler 180°						



0001=anodised
geanodiseerd
anodisé
eloxiert

9999=any RAL colour powder coated
elke RAL kleur poederlak
chaque teinte RAL peint-par-poudrage
jede RAL Farbe pulverbeschichtet

LED INSERTS

flat cover
h=52% CIE 65 91 98 100 52

curved cover
h=71% CIE 70 93 99 100 71

code	type
27.37607-4030	LED insert LO - L70mm - 0,25 insert
27.37600-4030	LED insert LO - L140mm - 0,5 insert
27.37610-4030	LED insert LO - L280mm - 1 insert
27.37620-4030	LED insert LO - L560mm - 2 inserts
27.37630-4030	LED insert LO - L840mm - 3 inserts
27.37640-4030	LED insert LO - L1120mm - 4 inserts
27.37650-4030	LED insert LO - L1400mm - 5 inserts
27.37608-4030	LED insert HO - L70mm - 0,25 insert
27.37601-4030	LED insert HO - L140mm - 0,5 insert
27.37611-4030	LED insert HO - L280mm - 1 insert
27.37621-4030	LED insert HO - L560mm - 2 inserts
27.37631-4030	LED insert HO - L840mm - 3 inserts
27.37641-4030	LED insert HO - L1120mm - 4 inserts
27.37651-4030	LED insert HO - L1400mm - 5 inserts

LO = low output, HO = high output

CRI
>80

CRI>90 on request
CRI>90 op aanvraag
CRI>90 sur demande
CRI>90 auf Anfrage

for direct or indirect distribution
voor directe of indirecte uitstraling
pour éclairage direct ou indirect
für direkte oder indirekte Ausstrahlung

flat cover
h=52% CIE 65 91 98 50 52

curved cover
h=61% CIE 64 91 98 42 61

code	type
27.37604-4030	LED insert 2x LO - L70mm - 0,25 insert
27.37602-4030	LED insert 2x LO - L140mm - 0,5 insert
27.37612-4030	LED insert 2x LO - L280mm - 1 insert
27.37622-4030	LED insert 2x LO - L560mm - 2 inserts
27.37632-4030	LED insert 2x LO - L840mm - 3 inserts
27.37642-4030	LED insert 2x LO - L1120mm - 4 inserts
27.37652-4030	LED insert 2x LO - L1400mm - 5 inserts

LO = low output

CRI
>80

CRI>90 on request
CRI>90 op aanvraag
CRI>90 sur demande
CRI>90 auf Anfrage

for direct/indirect distribution
voor directe/indirecte uitstraling
pour éclairage direct/indirect
für direkte/indirekte Ausstrahlung

HO LED inserts not available
HO LED modules niet beschikbaar
HO modules LED non disponibles
HO LED Einsätze nicht erhältlich

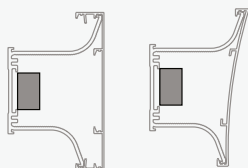


27= 2700K
30= 3000K
40= 4000K

for more information about the LED inserts, see pages 428-429
voor meer informatie over de LED modules zie pagina's 428-429
pour plus d'informations sur les modules LED, voir pages 428-429
für mehr Informationen zu den LED Einsätzen, siehe Seiten 428-429





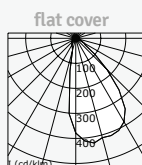
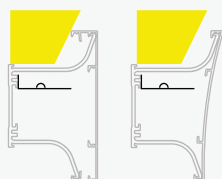


code	type	dim
27.370091w-0625	LED driver 25W	-
27.370091w-0650	LED driver 50W	-
27.370091w-0675	LED driver 75W	-
27.370091w-0825	LED driver 25W	DALI/TD
27.370091w-0850	LED driver 50W	DALI/TD
27.370091w-0875	LED driver 75W	DALI/TD

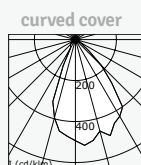
LO = low output, TD = touch-dim, 1-10V on request

for each type of driver, the code to be entered (W), the current (mA), the lumen value and the range are displayed. Choose the suitable driver based on the number of LED inserts (=range) and the lumen value · per type driver worden de in te vullen code (W), aansturing (mA), lumenwaarde en het bereik weergegeven. Kies de geschikte driver op basis van het aantal LED modules (=bereik) en de lumenwaarde · pour chaque type de driver, le code à choisir (W), le courant (mA), la valeur de lumen et la portée sont présentés. Choisissez le driver approprié en fonction du nombre de modules LED (=la portée) et la valeur de lumen · für jeden Treibertyp werden der einzugebende Code (W), die Ansteuerung (mA), der Lumenwert und der Bereich angezeigt. Wählen Sie den geeigneten Treiber gemäß der Anzahl LED Einsätze (=Bereich) und dem Lumenwert

	LO W=3 325mA 3,6W 670lm/280mm # inserts	2x LO W=3 325mA 3,6W 670lm/280mm # inserts	HO W=3 325mA 7,2W 1340lm/280mm # inserts
27.370091w-0625	2 - 4,25	1 - 2	1 - 2
27.370091w-0650	4,75 - 12	2,5 - 6	2,5 - 6
27.370091w-0675	12,25 - 19	5,25 - 9,5	6,25 - 9,5
27.370091w-0825	2 - 4,5	1 - 2	1 - 2,25
27.370091w-0850	4,75 - 12	2,5 - 6	2,5 - 6
27.370091w-0875	12,25 - 19	5,25 - 9,5	6,25 - 9,5



h=52% CIE 65 91 98 100 52



h=71% CIE 70 93 99 100 71

CRI
>90

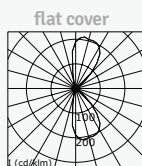
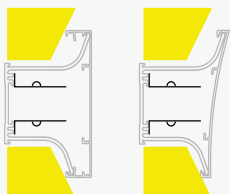
code	type
27.37630-9030	LED TW 2700-6500K 20,5W 2100lm LO - L840mm
27.37640-9030	LED TW 2700-6500K 26,4W 2800lm LO - L1120mm
27.37650-9030	LED TW 2700-6500K 32,0W 3500lm LO - L1400mm

27.37631-9030	LED TW 2700-6500K 41,1W 4500lm HO - L840mm
27.37641-9030	LED TW 2700-6500K 54,1W 6000lm HO - L1120mm
27.37651-9030	LED TW 2700-6500K 67,3W 7500lm HO - L1400mm

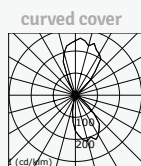
for direct or indirect distribution
voor directe of indirecte uitstraling
pour éclairage direct ou indirect
für direkte oder indirekte Ausstrahlung

LO = low output, HO = high output, TW = tunable white

DALI driver type 8 included · Inclusief DALI driver type 8 · driver DALI type 8 inclus · inklusive DALI Treiber Typ 8
type 6 on request · type 6 op aanvraag · type 6 sur demande · Typ 6 auf Anfrage



h=52% CIE 65 91 98 50 52



h=61% CIE 64 91 98 42 61

CRI
>90

code	type
27.37632-9030	LED TW 2700-6500K 2x 20,5W 2100lm LO - L840mm
27.37642-9030	LED TW 2700-6500K 2x 26,4W 2800lm LO - L1120mm
27.37652-9030	LED TW 2700-6500K 2x 32,0W 3500lm LO - L1400mm

for direct/indirect distribution
voor directe/indirecte uitstraling
pour éclairage direct/indirect
für direkte/indirekte Ausstrahlung

HO LED inserts not available
HO LED modules niet beschikbaar
HO modules LED non disponibles
HO LED Einsätze nicht erhältlich

LO = low output, TW = tunable white

DALI driver type 8 included · Inclusief DALI driver type 8 · driver DALI type 8 inclus · inklusive DALI Treiber Typ 8
type 6 on request · type 6 op aanvraag · type 6 sur demande · Typ 6 auf Anfrage

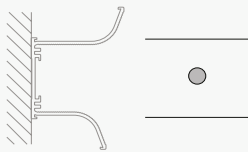
EMERGENCY MODULES



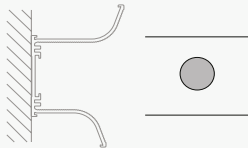
code	type
27.37290-0000	LED emergency 1h 350lm - selftest
27.37291-0000	LED emergency 3h 350lm - selftest
27.37292-0000	LED emergency 1h 350lm - selftest DALI
27.37293-0000	LED emergency 3h 350lm - selftest DALI

only applicable from 4 LED inserts (1h - selftest) or 6 LED inserts (3h - selftest) · min. 280-max. 560mm per driver in case of emergency
 enkel geschikt vanaf 4 LED modules (1h - selftest) of 6 LED modules (3h - selftest) · min. 280-max. 560mm per driver in noodtoestand
 seulement utilisable à partir de 4 modules LED (1h - selftest) ou 6 modules LED (3h - selftest) · min. 280-max. 560mm par driver en configuration secours
 nur geeignet ab 4 LED Einsätzen (1h - selftest) oder 6 LED Einsätzen (3h - selftest) · min. 280-max. 560mm pro Treiber im Notstand

FIXATIONS

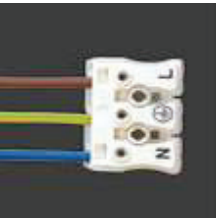


code	type
03.37206-0000	hole for wall mounting



code	type
03.37205-0000	entry hole for power cable

ADDITIONAL WIRING



standard wiring	1 switching circuit with 3 cables 1,5mm ² : L = phase (brown), N = neutral (blue), earthing (yellow-green)
standaard bedrading	1 schakelkring met 3 kabels 1,5mm ² : L = fase (bruin), N = nulleider (blauw), aarding (geel-groen)
câblage standard	1 circuit avec 3 câbles 1,5mm ² : L = phase (brun), N = neutre (bleu), terre (jaune-vert)
standard Verdrahtung	1 Schaltkreis mit 3 Kabeln 1,5mm ² : L = Phase (braun), N = Nulleiter (blau), Erdung (gelb-grün)



code	type
23.00099-1150	1 cable 1,5mm ² for additional switching circuit (grey or orange or violet)
23.00099-2075	2 cables 0,75mm ² for dimming (black & red)
23.00099-2150	2 cables 1,5mm ² for emergency module supply (white & blue)